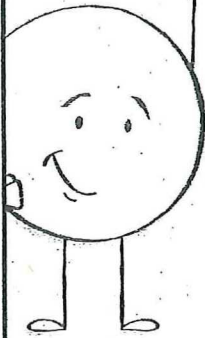


# PROKARYOTIC CELLS



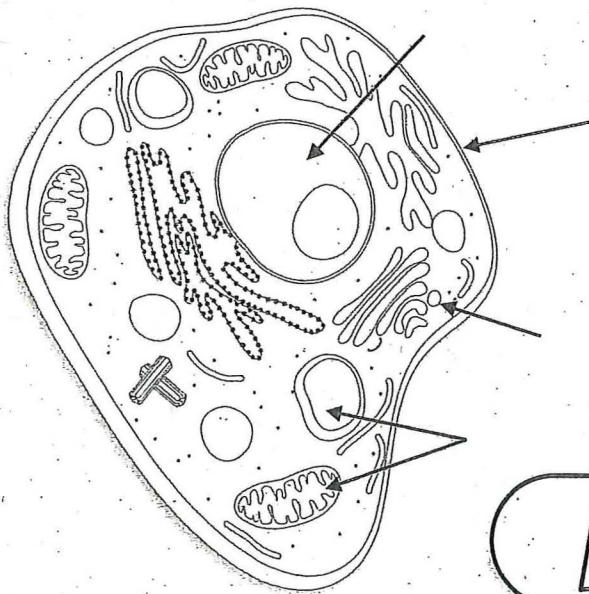
- Prokaryotic means " \_\_\_\_\_ " in Greek.
- Do NOT have a \_\_\_\_\_
- \_\_\_\_\_ DNA that floats \_\_\_\_\_ in the \_\_\_\_\_.
- No \_\_\_\_\_ bound \_\_\_\_\_.
- Typically \_\_\_\_\_ than eukaryotic cells.
- \_\_\_\_\_, meaning one cell.
- \_\_\_\_\_ or \_\_\_\_\_, meaning some can live without \_\_\_\_\_.



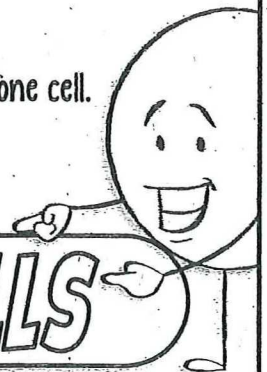
Cell Type	
Size of Cells	
Nucleus	
DNA Structure	
DNA Location	
Reproduction	

VS.

	Cell Type
	Size of Cells
	Nucleus
	DNA Structure
	DNA Location
	Reproduction



- Eukaryotic means " \_\_\_\_\_ " in Greek.
- Have a \_\_\_\_\_
- Have \_\_\_\_\_ bound \_\_\_\_\_.
- Typically much \_\_\_\_\_ than prokaryotic cells.
- \_\_\_\_\_, meaning more than one cell.
- \_\_\_\_\_ meaning most need \_\_\_\_\_ to survive.



# EUKARYOTIC CELLS