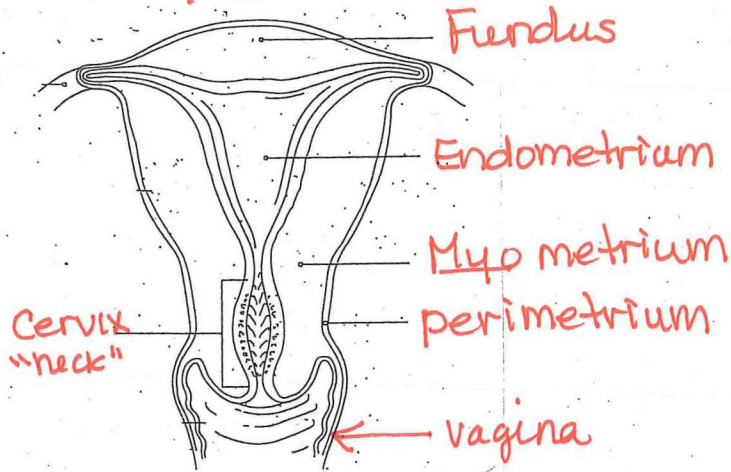
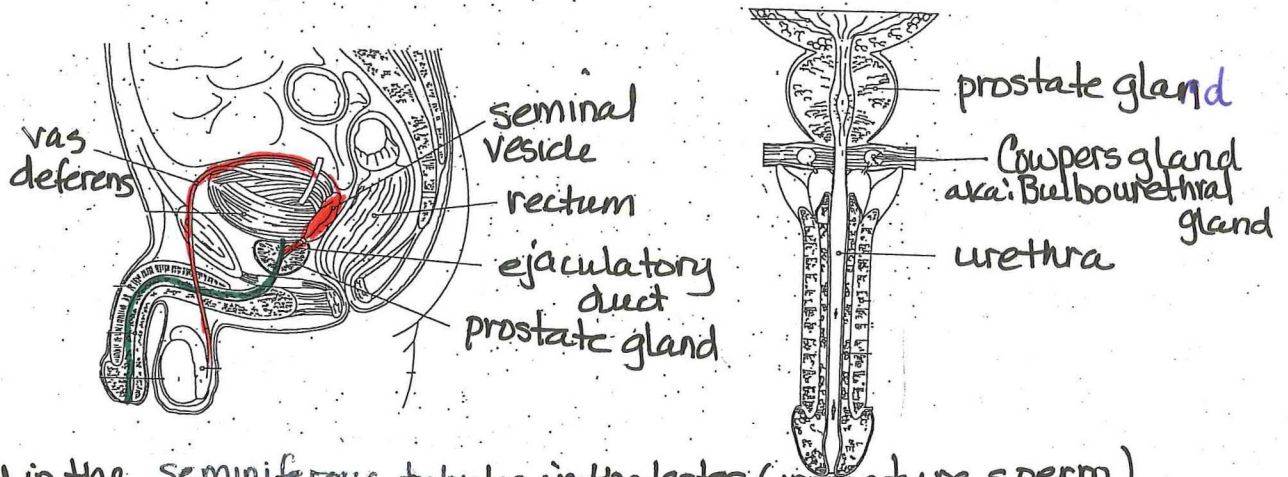


- Endometrium** -  
 - inner most layer of the uterus  
 - most active layer - Female reproductive system  
 "uterine lining" which is shed each month during menstrual cycle

- Myometrium** -  
 - muscle layer, thickest layer  
 - smooth muscle

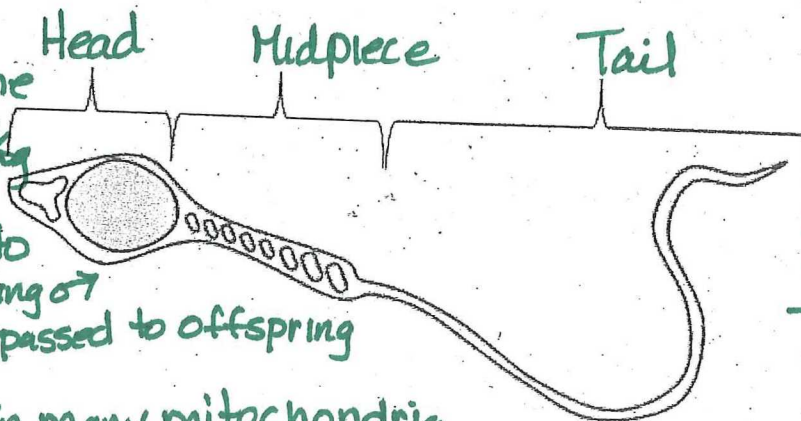


Male reproductive system



- Sperm** -  
 - produced in the seminiferous tubules in the testes (immature sperm)  
 - travel to epididymis where sperm are stored + mature  
 - when released from the body sperm travel through vas deferens which join into the urethra  
 - seminal vesicles contribute 1/2 the fluid that make up semen + secrete sugar into the semen to provide energy (as well as proteins, enzymes + other nutrients)  
 - Prostate Gland + Bulbourethral Gland contribute an alkaline (basic) solution to the semen to neutralize the acidic conditions in the urethra + ♀ reproductive system

**Head** - contains nucleus + acrosome (enzymes that break down the outer covering of the egg)  
 only head passes into the ovum - preventing mitochondria being passed to offspring



**Tail - Flagella**  
 - used to propel sperm through reproductive tract  
 - powered by ATP from mitochondria

**Midpiece** - contain many mitochondria to supply sperm with energy (ATP)