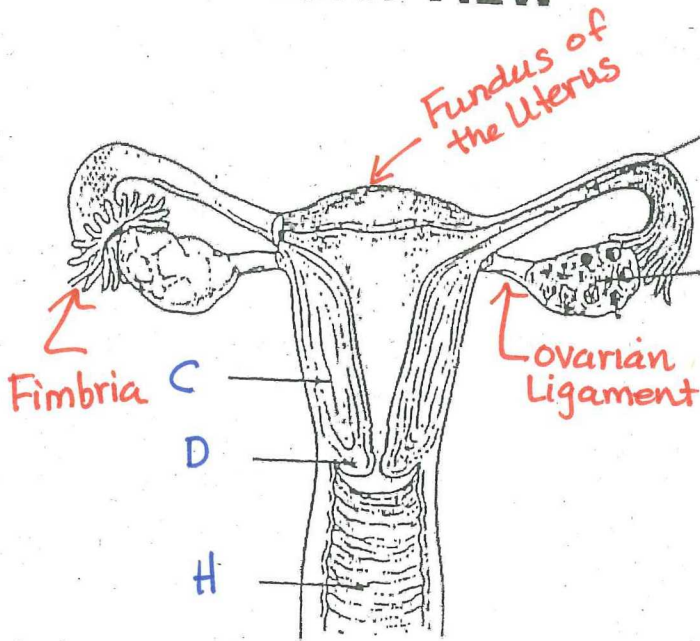
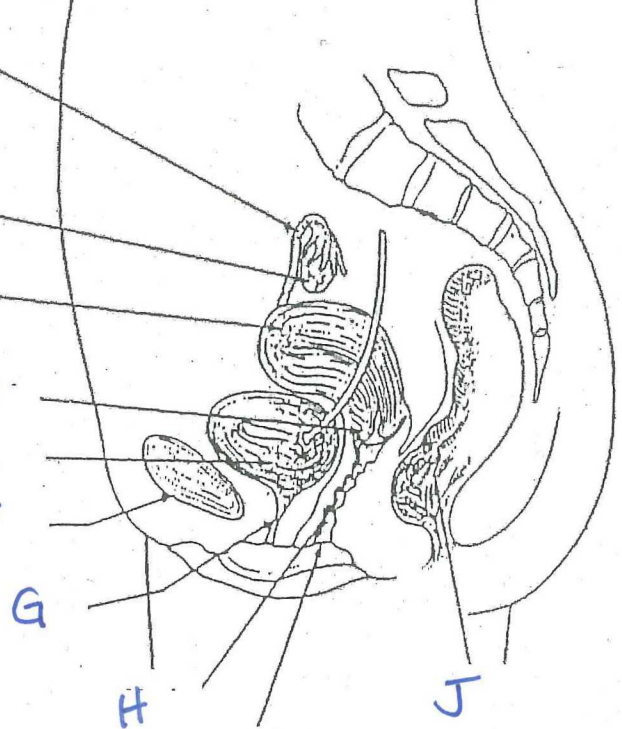


# FEMALE REPRODUCTIVE SYSTEM ♀

## FRONT VIEW



## (Sagittal view) SIDE VIEW



|   | English Term                   | German Term                     |
|---|--------------------------------|---------------------------------|
| A | aka: oviduct<br>Fallopian Tube | der Eileiter                    |
| B | Ovary                          | der Eierstock<br>die Eierstöcke |
| C | Uterus                         | die Gebärmutter                 |
| D | Cervix                         | der Gebärmutterhals             |
| E | Urinary Bladder                | die Harnblase                   |
| F | Pubic Bone                     |                                 |
| G | Urethra                        | die Harnröhre                   |
| H | Vagina                         | die Vagina, die Scheide         |
| I | Vaginal Opening                |                                 |
| J | Rectum                         |                                 |

### Main Role of ♀ Repro. System

- produce eggs
- receive sperm
- provide an environment that is right for fertilization of an egg + the development of the embryo

Female Hormones - estrogen + progesterone (produced in ovaries)

- ↑ in estrogen during puberty causes breast development, widening of hips, ↑ in fat tissue

Ovarian Ligament - connects ovary to the uterus)

Fimbria - fingerlike extensions that draw the egg into the Fallopian tube

Cervix (Latin - neck)  
- lower neck like portion of the uterus, entrance to the vagina

### Cervical cancer:

Pap Smear - removal of cells from the cervix to check for cancer

Uterus - "womb" where baby develops before birth  
- hollow muscular organ about the size of your fist  
- fertilized egg develops here  
- made up of Fundus, body of uterus, cervix

Fallopian Tube - a tube that the egg travels through after being released from the ovary on its way to the uterus

### Birth Control:

- I.U.D. - Intra Uterine Device - prevents implantation of a fertilized egg
- Diaphragm - covers the cervix to help prevent entry of sperm into the uterus
- Tubal Ligation - "tubes tied" tie off, clip the Fallopian tubes to stop the flow of an egg into the uterus, as well as prevents sperm from entering the fallopian tubes